

## MLS Area 8W

## Residential Statistics

## Independence Title

August 2021

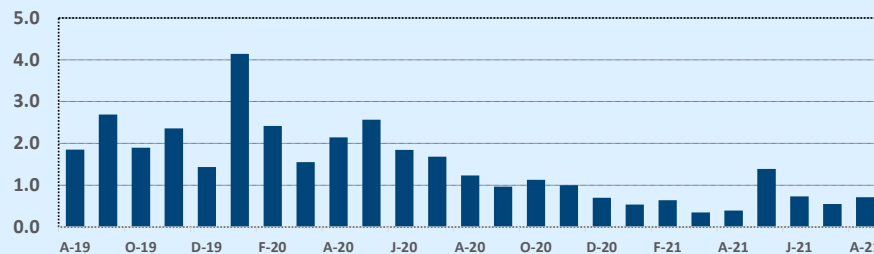
Listings	This Month			Year-to-Date		
	Aug 2021	Aug 2020	Change	2021	2020	Change
Single Family Sales	24	29	-17.2%	139	144	-3.5%
Condo/TH Sales	--	1	--	9	5	+80.0%
<b>Total Sales</b>	<b>24</b>	<b>30</b>	<b>-20.0%</b>	<b>148</b>	<b>149</b>	<b>-0.7%</b>
New Homes Only	1	1	--	1	4	-75.0%
Resale Only	23	29	-20.7%	147	145	+1.4%
Sales Volume	\$33,931,850	\$39,967,600	-15.1%	\$224,145,369	\$171,493,953	+30.7%
New Listings	21	23	-8.7%	176	214	-17.8%
Pending	2	37	-94.6%	7	173	-96.0%
Withdrawn	1	3	-66.7%	13	21	-38.1%
Expired	--	--	--	1	9	-88.9%
Months of Inventory	0.7	1.2	-42.6%	N/A	N/A	--

Average	This Month			Year-to-Date		
	Aug 2021	Aug 2020	Change	2021	2020	Change
List Price	\$1,379,167	\$1,354,098	+1.9%	\$1,466,594	\$1,170,211	+25.3%
List Price/SqFt	\$441	\$359	+22.8%	\$515	\$334	+54.0%
Sold Price	\$1,413,827	\$1,332,253	+6.1%	\$1,514,496	\$1,150,966	+31.6%
Sold Price/SqFt	\$452	\$354	+27.8%	\$521	\$329	+58.1%
Sold Price / Orig LP	102.0%	97.0%	+5.2%	103.4%	97.8%	+5.7%
Days on Market	10	41	-75.3%	18	34	-47.9%

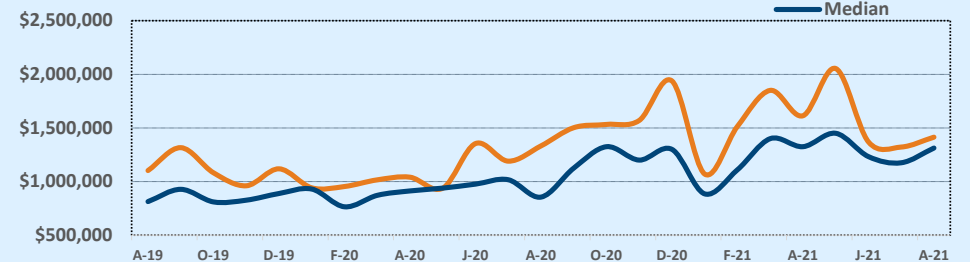
Median	This Month			Year-to-Date		
	Aug 2021	Aug 2020	Change	2021	2020	Change
List Price	\$1,285,000	\$862,400	+49.0%	\$1,150,000	\$885,000	+29.9%
List Price/SqFt	\$451	\$298	+51.5%	\$388	\$293	+32.2%
Sold Price	\$1,312,500	\$855,000	+53.5%	\$1,250,000	\$896,750	+39.4%
Sold Price/SqFt	\$446	\$303	+47.3%	\$413	\$292	+41.6%
Sold Price / Orig LP	101.0%	98.0%	+3.1%	103.0%	98.0%	+5.1%
Days on Market	6	20	-71.8%	6	11	-45.5%

Price Range	This Month			Year-to-Date		
	New	Sales	DOM	New	Sales	DOM
\$149,999 or under	--	--	--	--	--	--
\$150,000- \$199,999	--	--	--	--	--	--
\$200,000- \$249,999	--	--	--	--	--	--
\$250,000- \$299,999	--	--	--	--	1	7
\$300,000- \$349,999	--	--	--	--	--	--
\$350,000- \$399,999	1	1	8	3	3	14
\$400,000- \$449,999	--	--	--	1	1	4
\$450,000- \$499,999	1	--	--	5	1	3
\$500,000- \$549,999	--	2	5	5	4	20
\$550,000- \$599,999	1	--	--	4	3	2
\$600,000- \$699,999	1	--	--	11	10	10
\$700,000- \$799,999	3	1	19	16	9	24
\$800,000- \$899,999	2	2	21	12	11	11
\$900,000- \$999,999	1	1	22	16	9	24
\$1M - \$1.99M	9	14	9	69	69	17
\$2M - \$2.99M	1	2	6	17	14	12
\$3M+	1	1	3	17	13	39
<b>Totals</b>	<b>21</b>	<b>24</b>	<b>10</b>	<b>176</b>	<b>148</b>	<b>18</b>

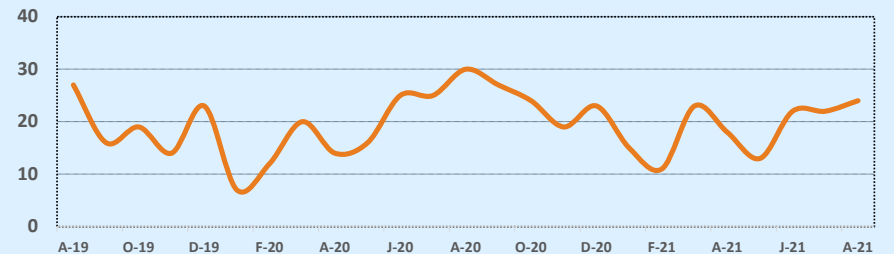
### Months of Inventory - Last Two Years



### Average & Median Sales Price - Last Two Years



### Number of Sales - Last Two Years



Based on information from the Austin Board of REALTORS® (alternatively, from ACTRIS). Neither the Board nor ACTRIS guarantees or is in any way responsible for its accuracy. The Austin Board of REALTORS®, ACTRIS and their affiliates provide the MLS and all content therein "AS IS" and without any warranty, express or implied. Data maintained by the Board or ACTRIS may not reflect all real estate activity in the market.